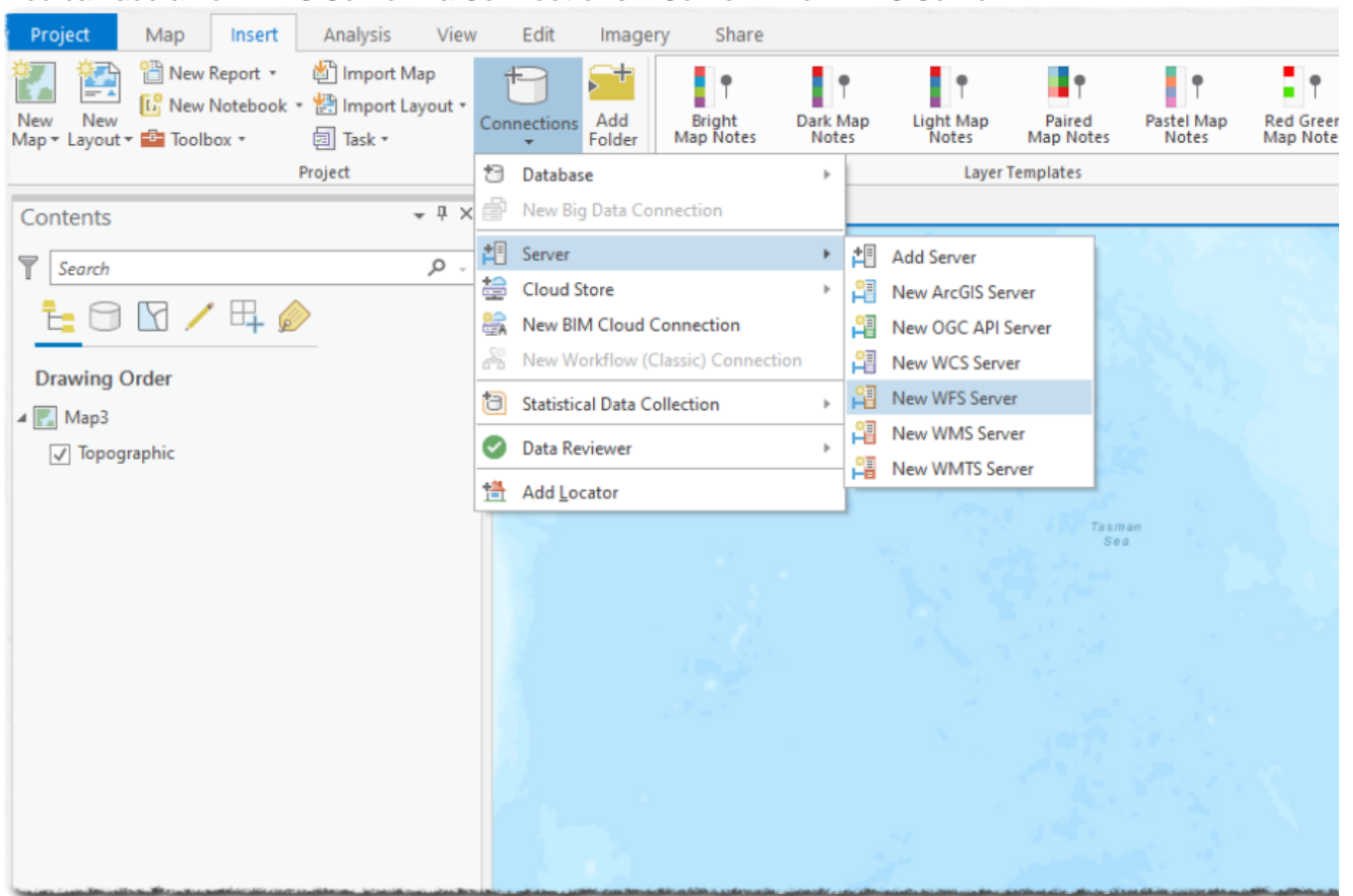


Accessing the Trap.NZ map feeds with ArcGIS

Accessing layers

1. You can add a **new WFS Server** via **Connections > Server > New WFS Server**:



2. Enter the WFS URL in the format as [described here](https://io.trap.nz/geo/trapnz-projects/wfs/{apikey}/{project_id})
`https://io.trap.nz/geo/trapnz-projects/wfs/{apikey}/{project_id}`
3. The WFS server is set to return a maximum of 10k features per request. Therefore you must set a page size value smaller than that. We suggest 5k to begin with. Add a custom request parameter of PAGESIZE, with a value of 5000
4. Leave the Authentication options blank (we are using the API key to control access)

Add WFS Server Connection

Server URL:

Examples: <http://gisserver.example.com/arcgis/services/SampleWorldCities/MapServer/WFSServer?>
<http://gisserver.example.com:8080/geoserver/ows?>

Version:

▼ Custom request parameters

Parameter	Value
PAGESIZE	5000

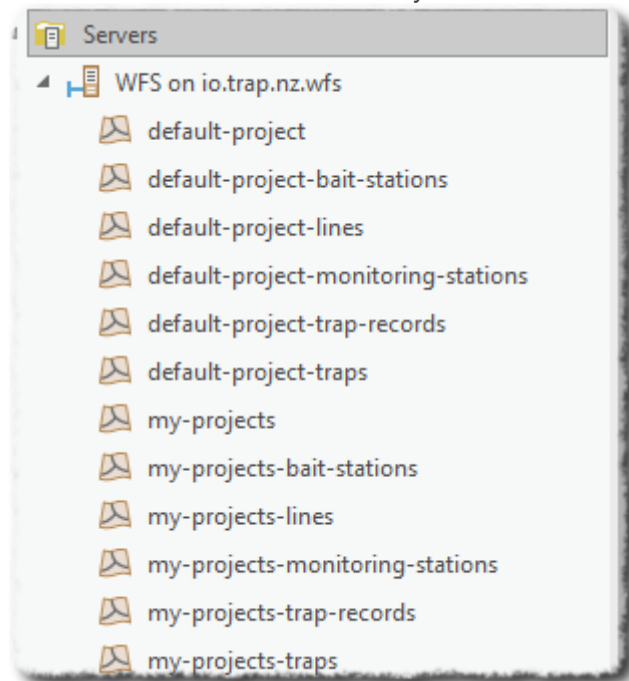
Authentication (Optional)

User Name:

Password:

☒ Save Username / Password to Windows Credential Manager
☐ Save Username / Password to connection file

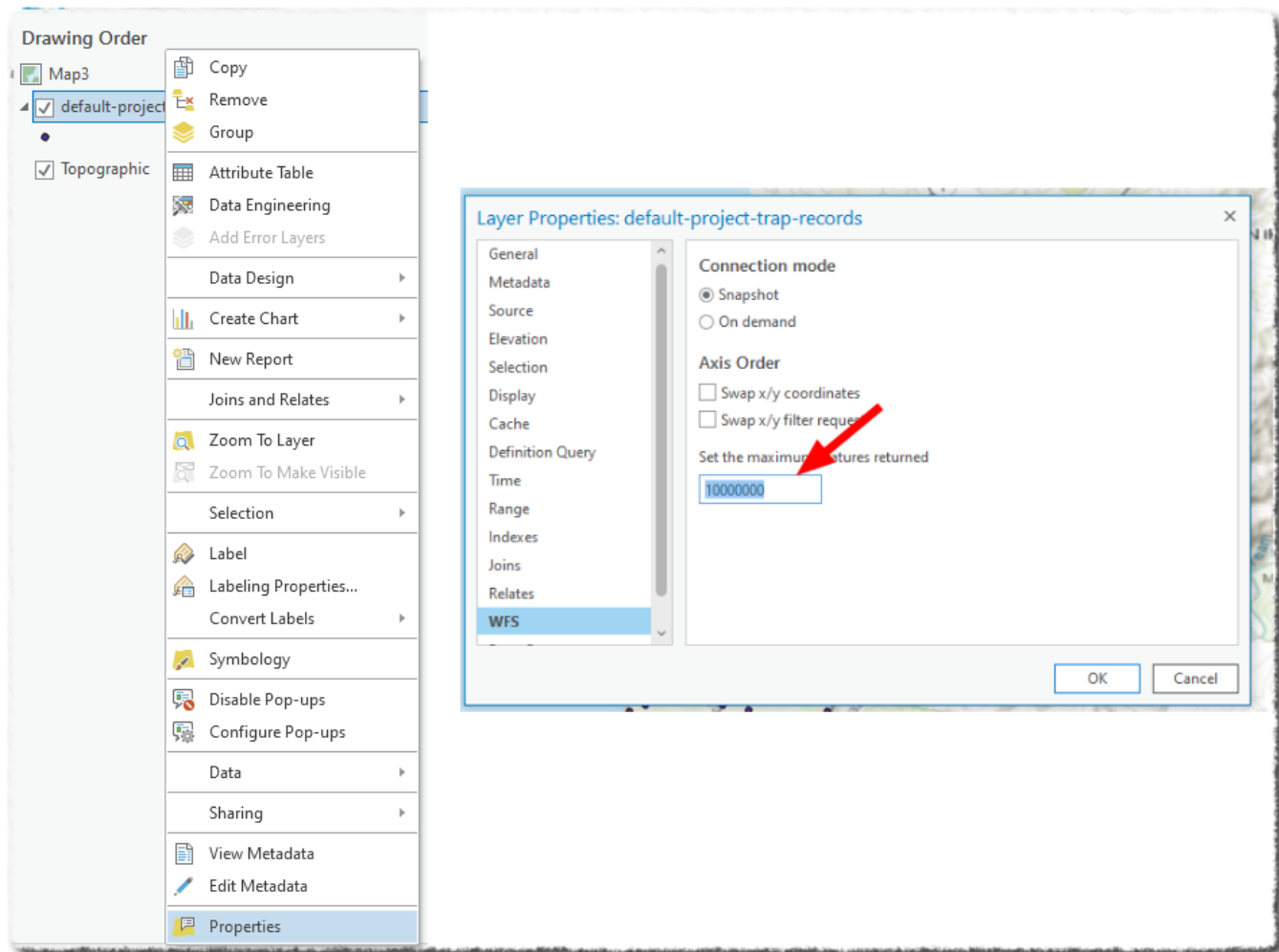
You will now see the available layers:



Working with the layers

Right-click or drag the layer to the map to see the features.

Note that, by default, ArcGIS only shows a maximum of 3000 features in the WFS layer. To change this, right-click the layers, select properties and then set the maximum features to something well above what you expect should be returned.



Filtering records

You can add a **CQL filter** to a WFS connection to filter features from the WFS server. This can be achieved by adding this parameter to the Custom request parameters - which can greatly reduce the amount of data retrieved (speeding up the transfer and improving performance).

For example - if you are only interested in this year's records, you could add a CQL filter as a Custom request parameter

WFS Server Connection Properties: WFS on io.trap.nz.wfs

General

Name: WFS on io.trap.nz.wfs

Server URL: https://io.trap.nz/geo/trapnz-projects/

Examples: http://gisservice.example.com/arcgis/services/SampleWorldCities/MapServer/WFSServer?
http://gisservice.example.com:8080/geoserver/ows?

Version: 2.0.0

Custom request parameters

Parameter	Value
PAGESIZE	5000
SWAPXY	FALSE
SWAPXYFILTER	FALSE
cql_filter	record_date %3E '2021-01-01'

Add Row Remove Row

Authentication (Optional)

User Name:

OK Cancel

Add **cql_filter** as Parameter, and **record_date %3E '2021-01-01'** as Value.

Note: symbols such as '<' and '>' need to be URL encoded, hence the **%3E** in place of >

Revision #2

Created 15 December 2021 20:22:23 by Daniel Bar-Even

Updated 16 December 2021 01:22:36