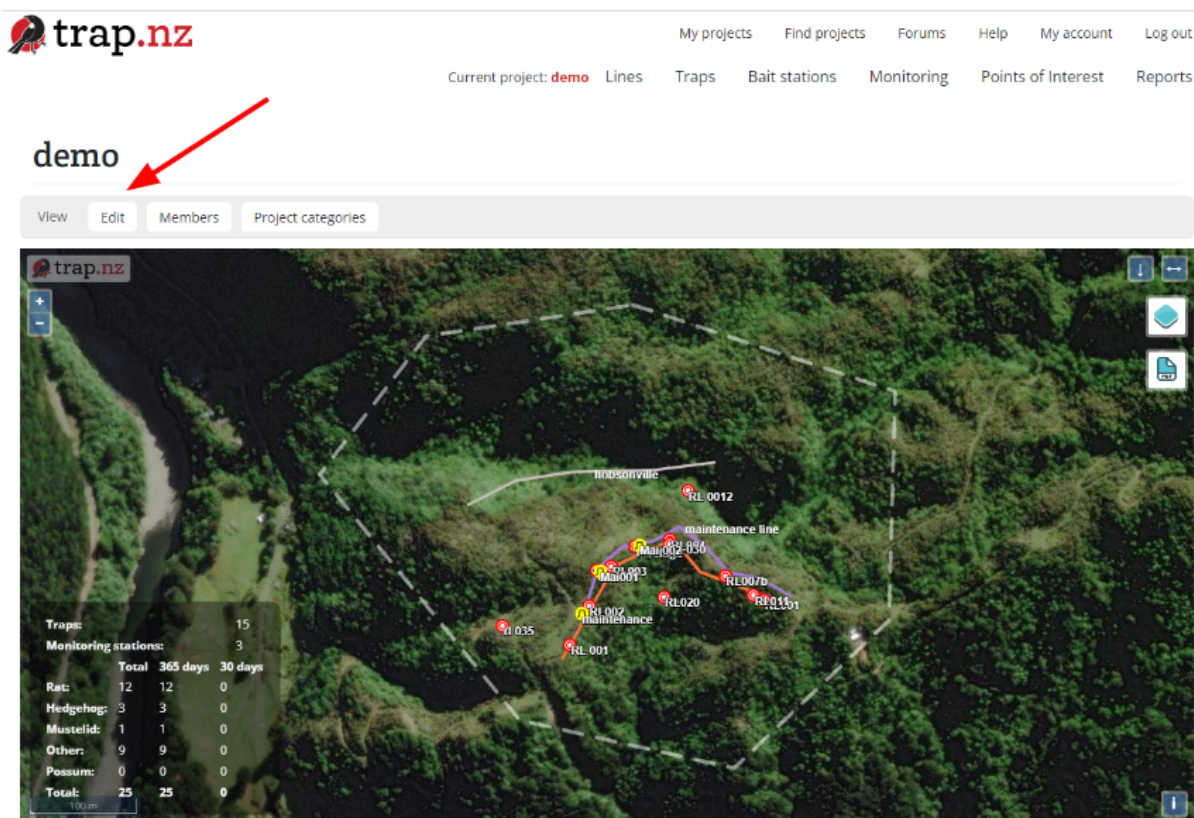


Editing your project's boundaries

There are many different reasons you may need to edit your project boundaries, and if you are the administrator you have the permissions to undertake these changes

1. Click the edit tab above the map window on the project's cover page



2. This will open up the page where you can make changes to the project,

Click on the edit hand,(between the polygon and the delete options at the bottom of the map), then click inside your project boundaries

Please enter the details for your project.
Need help?

Project name *

demo

Location *



Data

POLYGON ((175.22148462976 -40.832946143743, 175.22440823694 -40.833676727621, 175.22433757782 -40.835612883853,

☒ List this project publicly?

☒ Share summary data?

Extra (optional)

Project Type

Optionally tag your project - e.g. rural, reserve, etc. This can be useful if you manage many projects. Tags will be lowercased.

Enabled features

- ☒ Traps
- ☒ Bait stations
- ☒ Monitoring
- ☒ Points of Interest

Your Organisations

- None -

Species top 5 *

- ☒ Use PF2050 species list
- ☐ Use project top 5 species

We show a catch summary on the project landing page. You can choose between showing counts from the PF2050 species list (Mustelids, Rats, Possums and Hedgehogs) or the top 5 species caught by your project. Note that Cats are counted as "Other" in the project top 5 to discourage public targeting.

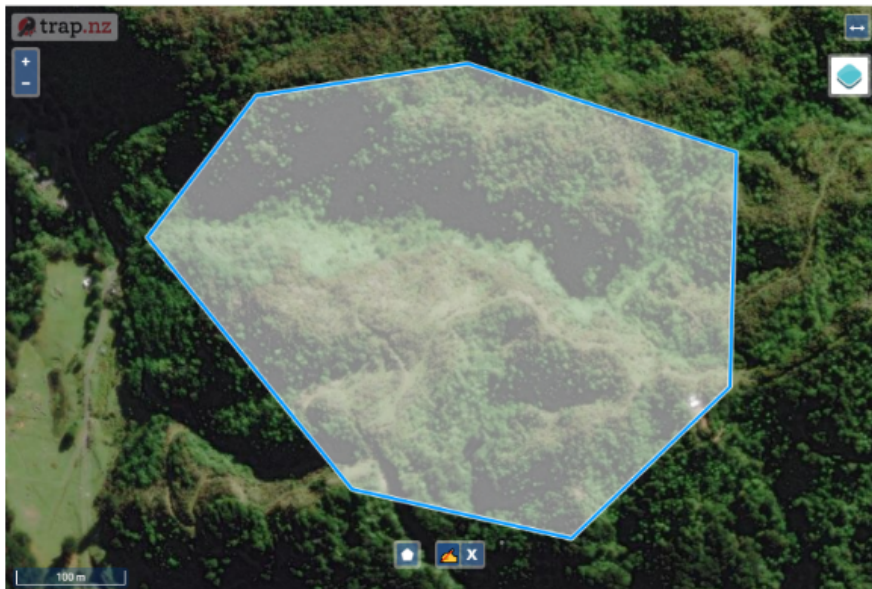
3. It will turn blue making it ready for editing

🔔 Please enter the details for your project.
Need help?

Project name *

demo

Location *



Data

POLYGON (((175.22148462976 -40.832946143743, 175.22440823694 -40.833676727621, 175.22433757782 -40.835612883853,

☒ List this project publicly?

☒ Share summary data?

Extra (optional)

Project Type

Optionally tag your project - e.g. rural, reserve, etc. This can be useful if you manage many projects. Tags will be lowercased.

Enabled features

- ☒ Traps
- ☒ Bait stations
- ☒ Monitoring
- ☒ Points of Interest

Your Organisations

- None -

Species top 5 *

- ☒ Use PF2050 species list
- ☐ Use project top 5 species

We show a catch summary on the project landing page. You can choose between showing counts from the PF2050 species list (Mustelids, Rats, Possums and Hedgehogs) or the top 5 species caught by your project. Note that Cats are counted as "Other" in the project top 5 to discourage public targeting.

4. Shift the cursor over the edge of the polygon and a black circle will appear, Click and drag the polygon into its new dimensions

Please enter the details for your project.
[Need help?](#)

Project name *

Location *



Data

☒ List this project publicly?

☒ Share summary data?

Extra (optional)

Project Type

Optionally tag your project - e.g. rural, reserve, etc. This can be useful if you manage many projects. Tags will be lowercased.

Enabled features

- ☒ Traps
- ☒ Bait stations
- ☒ Monitoring
- ☒ Points of Interest

Your Organisations

- None -

Species top 5 *

- ☒ Use PF2050 species list
- ☐ Use project top 5 species

We show a catch summary on the project landing page. You can choose between showing counts from the PF2050 species list (Mustelids, Rats, Possums and Hedgehogs) or the top 5 species caught by your project. Note that Cats are counted as "Other" in the project top 5 to discourage public targeting.

5. When you are happy with the new boundaries click the edit hand again and the map polygon will turn green

Please enter the details for your project.
[Need help?](#)

Project name *

Location *



Data

☒ List this project publicly?

☒ Share summary data?

Extra (optional)

Project Type

Optionally tag your project - e.g. rural, reserve, etc. This can be useful if you manage many projects. Tags will be lowercased.

Enabled features

- ☒ Traps
- ☒ Bait stations
- ☒ Monitoring
- ☒ Points of Interest

Your Organisations

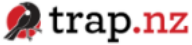
- None -

Species top 5 *

- ☒ Use PF2050 species list
- ☐ Use project top 5 species


We show a catch summary on the project landing page. You can choose between showing counts from the PF2050 species list (Mustelids, Rats, Possums and Hedgehogs) or the top 5 species caught by your project. Note that Cats are counted as "Other" in the project top 5 to discourage public targeting.

6. The coordinates of the new boundary will update and autofill and don't forget to save the new changes



[My projects](#) [Find projects](#) [Forums](#) [Help](#) [My account](#) [Log out](#)

Current project: **demo** [Lines](#) [Traps](#) [Bait stations](#) [Monitoring](#) [Points of Interest](#) [Reports](#)



☒ Bait stations
☒ Monitoring
☒ Points of Interest
Your Organisations
- None -
Species top 5 *
☒ Use PF2050 species list
☐ Use project top 5 species
We show a catch summary on the project landing page. You can choose between showing counts from the PF2050 species list (Mustelids, Rats, Possums and Hedgehogs) or the top 5 species caught by your project. Note that Cats are counted as "Other" in the project top 5 to discourage public targeting.

Data

POLYGON((175.22148462976 -40.832946143743015,175.22440823694 -40.83367672762099,175.22433757781997 -40.835612883852995,175.2226111569 -40.836862790976994,175.22021770477 -40.83645707943101,175.22052355157936 -40.834583527105835,175.21916898888 -40.833209966628,175.22148462976 -40.832946143743015))

This is the area your trap project covers. When adding traps, bait stations, etc., the map will be zoomed into the area you specify here, and if using the app it will determine the map area downloaded for offline use. If you make your project publicly visible it will also be displayed on the homepage map. [Help](#)

Contact details (optional)

For video help click the you tube link here <https://www.youtube.com/watch?v=cav-x49bzSg>

Revision #2

Created 12 December 2022 21:53:01 by Lenore Winterburn

Updated 19 December 2022 02:21:45 by Lenore Winterburn